

Preparation

**Part Number: PTR03-34160, PTR03-34191  
PTR03-34161, PTR03-34190**

**Kit Contents PTR03 – 34160/34191 (Muffler)**

Item #	Quantity Req.	Description
1	1	Center Muffler Assembly

**Kit Contents**

**PTR03 – 34161 (Tailpipe Kit, Polished)**

**PTR03 – 34190 (Tailpipe Kit, Black Chrome)**

Item #	Quantity Req.	Description
1	2	Tail Pipe Assembly
2	1	Hardware Bag
3	1	Heat Shield
4	1	Gasket Bag

**Hardware Bag Contents**

Item #	Quantity Req.	Description
1	1	Bracket Sub-Assembly
2	1	M8 Nut
3	1	M8 Bolt
4	1	Rubber Hanger

**Gasket Bag Contents**

Item #	Quantity Req.	Description
1	2	Gasket
2	6	M10 Nut
3	6	M10 Bolt

**Additional Items Required For Installation**

Item #	Quantity Req.	Description
1		

**Conflicts**

Short wheelbase vehicles, long wheelbase vehicles, & V6 vehicles

**General Applicability**

Models with medium length wheelbase and 4.6L or 5.7L engine

**Recommended Sequence of Application**

Item #	Accessory
1	Bumper / Bed Step Assist
2	TRD Exhaust
3	

\*Mandatory

**Vehicle Service Parts** (may be required for reassembly)

Item #	Quantity Req.	Description
1		

**Recommended Tools**

Personal & Vehicle Protection	Notes
None	
Special Tools	Notes
Exhaust Hanger Tool	e.g. Snap On P/N YA3202
Installation Tools	Notes
Ratchet	3/8" Drive
Socket	10,12,13,14 mm
3" Ratchet Extension	3/8" Drive
Torque Wrench	50 ft-lbf (70 N-m)
Special Chemicals	Notes
Lubricant	Soap and Water

**Legend**

**STOP:** Damage to the vehicle may occur. Do not proceed until process has been complied with.

**OPERATOR SAFETY:** Use caution to avoid risk of injury.

**CAUTION:** A process that must be carefully observed in order to reduce the risk of damage to the accessory/vehicle and to ensure a quality installation.

**TOOLS & EQUIPMENT:** Used in Figures calls out the specific tools and equipment recommended for this process.

**REVISION MARK:** This mark highlights a change in installation with respect to previous issue.

**SAFETY TORQUE:** This mark indicates that torque is related to safety.



Care must be taken when installing this accessory to ensure damage does not occur to the vehicle. The installation of this accessory should follow approved guidelines to ensure a quality installation.


These guidelines can be found in the "Accessory Installation Practices" document.

This document covers such items as:-

- Vehicle Protection (use of covers and blankets, cleaning chemicals, etc.).
- Safety (eye protection, rechecking torque procedure, etc.).
- Vehicle Disassembly/Reassembly (panel removal, part storage, etc.).
- Electrical Component Disassembly/Reassembly (battery disconnection, connector removal, etc.).

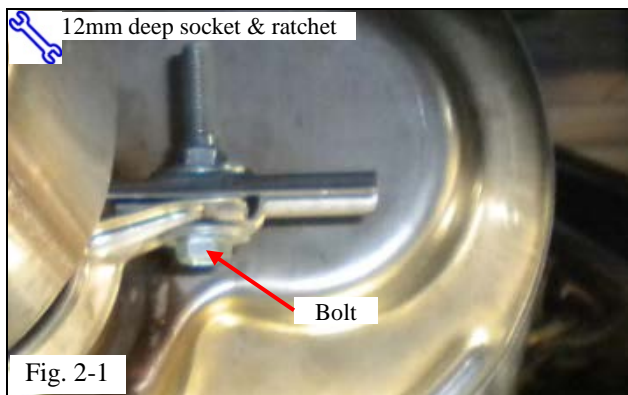
Please see your Toyota dealer for a copy of this document.

**1. Check the Kit Contents.**


-  (a) Make sure that the kit contains all of the parts listed in the kit contents.

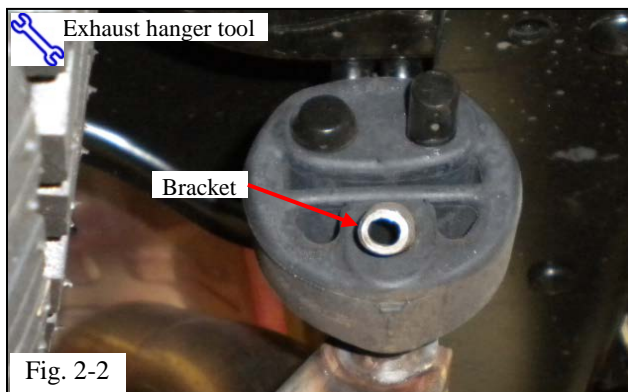
**2. Remove the Factory Exhaust System.**

- (a) Remove the V-band clamp bolt and clamp located in the rear of the original equipment (OE) muffler (Fig. 2-1).



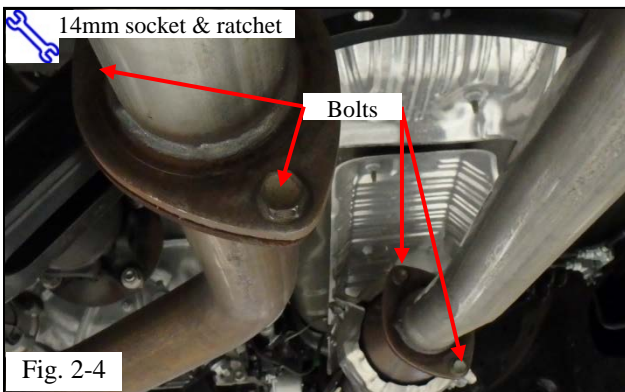
- (b) Pry the passenger side tailpipe bracket loose from the rubber hanger (Fig. 2-2).

 **NOTE:** Lubrication (such as soap and water) on the rubber exhaust hangers can facilitate removal and installation of the rubber hangers.



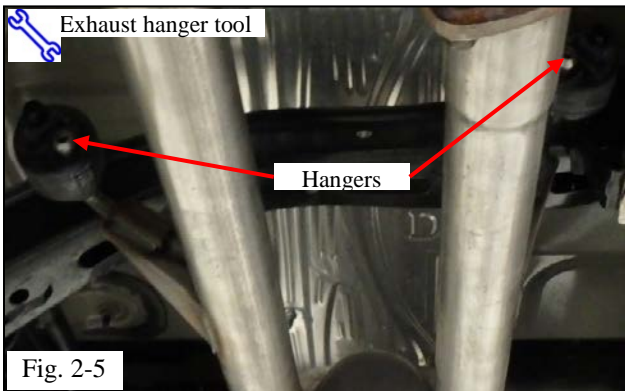


- (c) Remove the OE tailpipe assembly from the vehicle (Fig. 2-3).
- (d) Leave the OE rubber hanger that held the OE tailpipe on the vehicle rod hanger.



- (e) Remove the four bolts from the two front flanges located between the catalytic converters and the OE center muffler assembly front pipes (Fig. 2-4).

**NOTE:** Retain the four bolts and two gaskets for reuse.



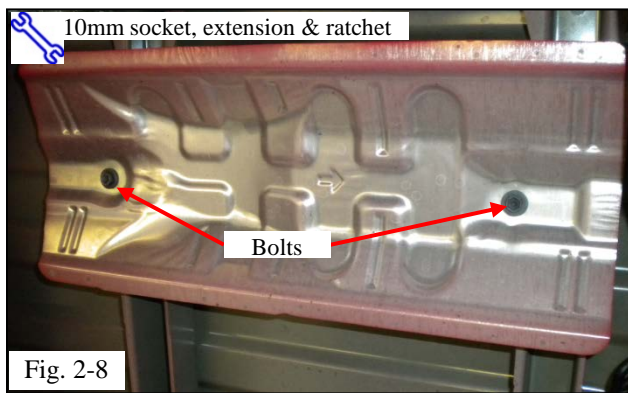
- (f) Pry both OE center muffler assembly front pipe hangers loose from the two rubber hangers, located in front of the muffler, and leave the rubber hangers in place (Fig. 2-5).



- (g) Pry the rubber hanger located at the back of the muffler loose from the vehicle side hanger rod (Fig. 2-6).



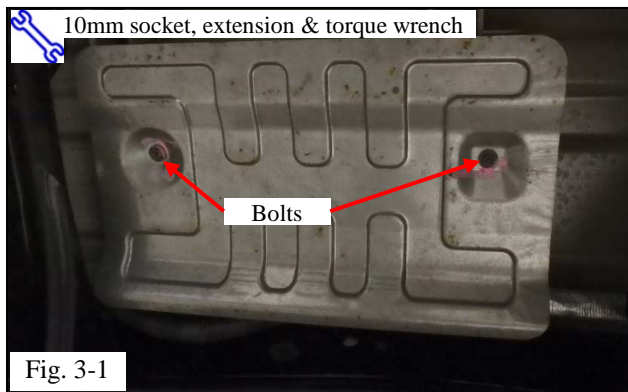
- (h) Remove the OE center muffler assembly; remove the rubber hanger from the rear of the muffler (Fig. 2-7).



- (i) Locate the body side heat shield on the rear deck above the original tailpipe. Remove the two bolts holding the body side heat shield to the rear deck and remove the heat shield (Fig. 2-8).

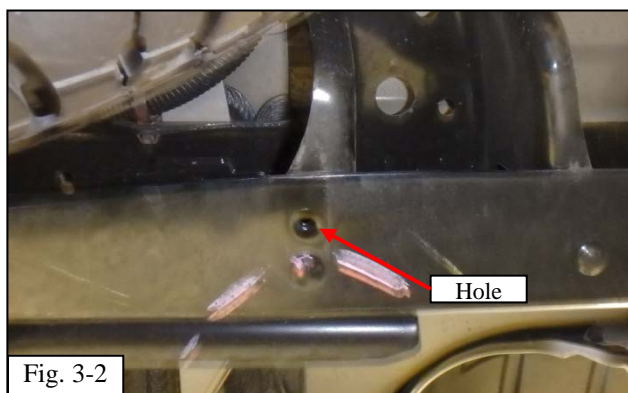
**NOTE:** Retain the two bolts for reuse.

### 3. Install the TRD Exhaust System.



- (a) Use the OE bolts removed in Step 2(i) to install the TRD heat shield. Tighten the bolts to (Fig. 3-1). Ensure the slotted hole is located toward the rear of the vehicle.

**Torque: 6.5 ft-lbf (0.9 N-m)**



- (b) Locate the hole on the rear driver side channel of the spare tire carrier and chassis rail (Fig. 3-2).



- (c) Locate the larger hole on the exhaust bracket to the rivet head while engaging the bracket slot onto the vehicle cross-member. Insert the 8mm bolt supplied in the kit into the smaller hole from above (Fig. 3-3).

**⚠ NOTE:** Prior to installing the fastener, the bracket may not sit flush against the frame.

- (d) Install the M8 nut on the bolt. Make sure the hole and bolt are centered. Confirm the bracket around the nut is flush to the frame rail (Fig. 3-3).

**Torque: 26 ft-lbf (35 N-m)**

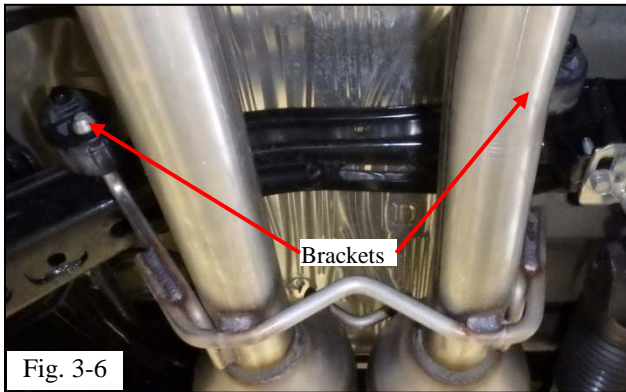
**⚠ NOTE:** Access to the bolt to secure the bracket is from above the chassis rail.

- (e) Install the new rubber hanger, supplied in the kit, on the hanger rod (Fig. 3-4).



- (f) Reinstall the rubber hanger removed in Step 2(h) to the rear hanger of the muffler assembly (Fig. 3-5).




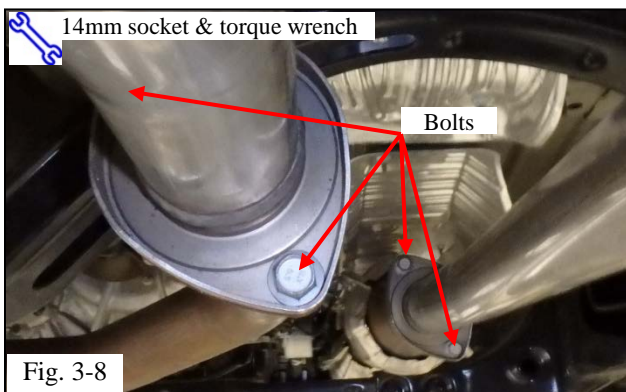


- (g) Attach the two hanger brackets of the TRD center muffler assembly front pipes to the existing rubber hangers and rods on the vehicle frame (Fig. 3-6).




- (h) Attach the rubber hanger on the rear of the TRD center muffler assembly to the hanger on the vehicle frame (Fig. 3-7).
- (i) **PPO Only:** Verify the OE gaskets at the two front flanges, located between the catalytic converters and muffler front pipes, are in place before reconnecting the pipes.

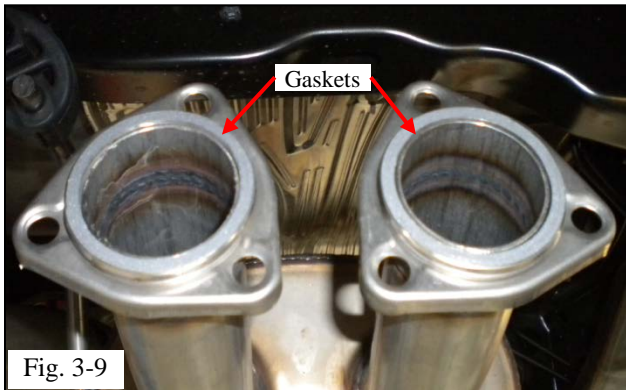
-  (j) **DIO Only:** Replace the gaskets at the two front flanges, located between the catalytic converters and muffler front pipes, with new parts (Part number 90917-A6002).



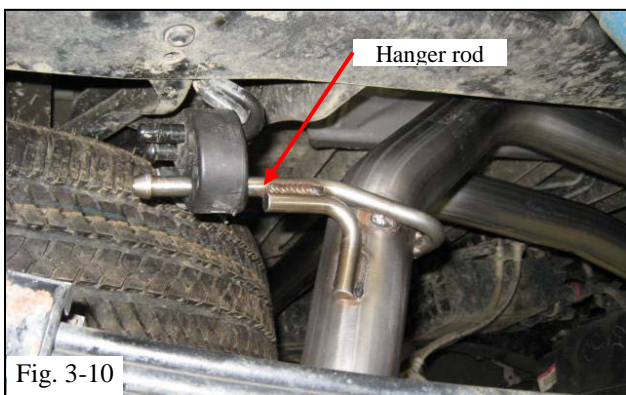
- (k) Align the TRD center muffler assembly front pipes with the catalytic converters' rear pipes. Reinstall the OE bolts (removed in Step 2(e)) on both flanges evenly, ensuring proper flange alignment (Fig. 3-8).

**Torque: 35 ft-lbf (48 N-m)**

-  **NOTE:** Verify the gap between the flanges is even on both sides of the bolts.



- (l) Install the two new gaskets, supplied in the kit, on the TRD center muffler assembly rear outlet pipes (Fig. 3-9).



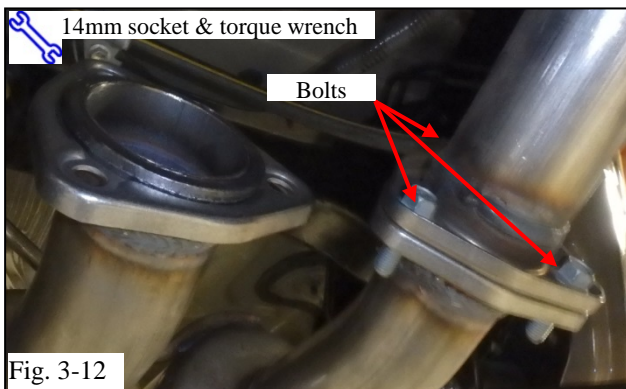
- (m) Attach the hanger rod of the TRD RH tailpipe assembly to the rubber hanger on the vehicle frame (Fig. 3-10).

**⚠ NOTE:** Verify the gaskets have been installed on the outlet pipes of the TRD center muffler assembly and are seated flat on the exhaust flange (Fig. 3-9).



- (n) Align the RH tailpipe with the RH outlet pipe on the muffler and install the nuts and bolts. While tightening the bolts, set a gap of  $30 \pm 5$ mm between the exhaust tip and the rear side panel (Fig. 3-11).

**Torque: 35 ft-lbf (48 N-m) (Fig. 3-12)**



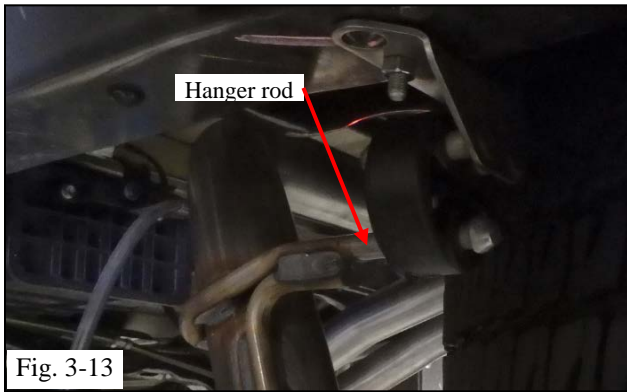


Fig. 3-13

- (o) Attach the hanger rod of the TRD LH tailpipe assembly to the rubber hanger on the vehicle frame (Fig. 3-13).

**⚠ NOTE:** Verify the gaskets have been installed on the outlet pipes of the TRD center muffler assembly and are seated flat on the exhaust flange (Fig. 3-9).

- (p) Align the LH tailpipe with the LH outlet pipe on the muffler and install nuts and bolts. While tightening the bolts, set a gap of  $30\pm 5$ mm between the exhaust tip and the rear side panel (Fig. 3-11).

**Torque: 35 ft-lbf (48 N-m) (Fig. 3-14)**

- ⚠** (q) Wipe both LH and RH exhaust tips with glass cleaner and a non-scratching clean cloth if necessary. This is to remove any fingerprints or smudge marks, to prevent staining of the exhaust tips when they are first heated.

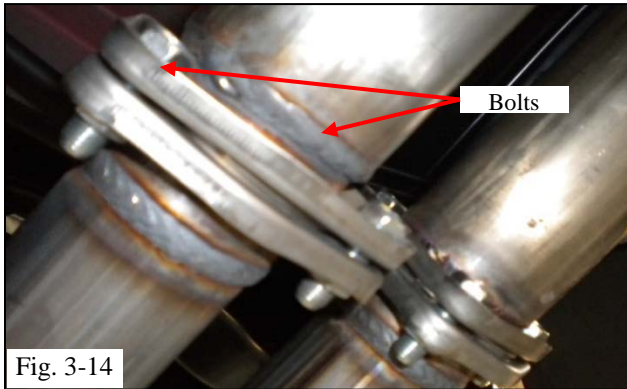


Fig. 3-14



Checklist - these points **MUST** be checked to ensure a quality installation.

<u>Check:</u>	<u>Look For:</u>
<p><u>Accessory Function Checks</u></p> <ul style="list-style-type: none"><li><input type="checkbox"/> Verify parts:</li><li><input type="checkbox"/> Correct part has been installed</li><li><input type="checkbox"/> All joints have been securely fastened</li><li><input type="checkbox"/> Hooks/hangers have been securely reattached</li></ul>	<p>Removed items have been discarded &amp; replaced items are in place</p> <p>Verify part number on package</p> <p>Verify joints are tightened</p> <p>Verify hooks/hangers are securely attached</p>
<p><u>Vehicle Function Checks</u></p> <ul style="list-style-type: none"><li><input type="checkbox"/> Check for leaks</li><li><input type="checkbox"/></li><li><input type="checkbox"/></li></ul>	<p>Verify the pipe flange and clamp joints do not have abnormal leak sound or water leak</p>
<p><u>Vehicle Appearance Check</u></p> <ul style="list-style-type: none"><li><input type="checkbox"/> After accessory installation and removal of protective cover(s), perform a visual inspection.</li></ul>	<p>Ensure no damage (including scuffs and scratches) was caused during the installation process.</p> <p>(For PPO installations, refer to TMS Accessory Quality Shipping Standard.)</p>